

The  
**RIDGEWOOD**  
AT Shenango Valley

**Personal Care**

*The Ridgewood's personal care is for individuals who need assistance with daily activities. These residents receive the following services/benefits included in monthly fees:*

- ◆ A private apartment for your use
- ◆ Access to a continuum of health care within the St. Paul's community
- ◆ Access to 24-hour staffing for emergencies
- ◆ Weekly housekeeping with linens changes
- ◆ Local transportation
- ◆ Utility services - electric, water, sewer, trash removal
- ◆ Emergency help call system
- ◆ Wall-to-wall carpeting & mini-blinds
- ◆ Individual control of heat & air conditioning
- ◆ Kitchenette with refrigerator, microwave and sink
- ◆ Private bath including shower with handrails
- ◆ Spa with whirlpool bath and staff standby assistance
- ◆ Centrally located washers and dryers
- ◆ On-site gift shop to purchase convenience items
- ◆ Central mail center - security of mail and parcels
- ◆ A variety of common areas for residents' use including a beautiful outdoor pavilion
- ◆ Opportunity for volunteer involvement
- ◆ Insurance coverage (building and liability)
- ◆ Maintenance, repair and replacement of the Ridgewood's property
- ◆ Maintenance of grounds - all seasons
- ◆ Security patrol & street light protection
- ◆ All required Assessments and Support Plans
- ◆ Medication reviews with LPN
- ◆ Coordinate pharmacy services as needed
- ◆ Coordinate lab work as needed
- ◆ Staff communications with physicians
- ◆ Emergency assistance with securing health care
- ◆ Staff communications with family or designated person
- ◆ Personal shopping
- ◆ Resident Fund Account
- ◆ Arranging transportation
- ◆ Scheduled transportation for shopping, errands, business in community
- ◆ Vitals, weights, blood sugar tests, and oxygen monitoring
- ◆ Assistance with reading and writing correspondence
- ◆ Staff maintaining current records
- ◆ Access to 24-hour staffing for personal care services:
  - ◆ Assistance with dressing / undressing
  - ◆ Assistance with showering \ whirlpool baths
  - ◆ Assistance with grooming \ shaving \ hair care
  - ◆ Assistance of one staff member for mobility and transferring needs
  - ◆ Encouragement and assistance with participating in social and leisure activities



## Personal Care continued

- ♦ Assistance with medications including ordering\reordering prescriptions and medications, handling medication changes with physician, and deliver service by the Medicine Shoppe, Rite Aid, or PharMerica
- ♦ Securing health care services - i.e. consulting with physicians for medications, treatment, appointments; consulting with pharmacy on medications
- ♦ Routine bathroom assistance - incontinence program\assistance
- ♦ Three daily meals with special and\or simple diets, supplements, menu selections, food preparations
- ♦ Volunteer companions
- ♦ Full activity calendar - social, recreational, and spiritual events
- ♦ Added housekeeping
- ♦ Routine monitoring - staff visiting resident on a scheduled basis if supervision is needed
- ♦ Routine snacks
- ♦ Routine vitals, blood sugars, weights, and health care monitoring
- ♦ Routine skin treatment
- ♦ LPN services (i.e. colostomy monitoring, skin treatments, diabetic care, catheter care)
- ♦ Assistance with caring for personal possessions
- ♦ Oxygen monitoring
- ♦ Inhalation treatments
- ♦ Securing health care services
- ♦ Making appointments and reminding residents of appointments
- ♦ Assistance with making and receiving phone calls
- ♦ Assistance with receiving and sending mail



## **Respite Services**

*The Ridgewood's Respite Service is for individuals who need short term personal care service or are considering a long term move into assisted living.*

*These residents receive all of the services and benefits listed for personal care.*

*In addition the following services\benefits are include in the daily fee:*

- ◆ Local phone service
- ◆ Cable television
- ◆ A furnished apartment including bed and bath linens
- ◆ Laundry services as needed



*Services available at The Ridgewood at Shenango Valley on a Fee-for-Service Basis are:*

- ◆ Nursing care at The Villas at St. Paul's if needed
- ◆ Hair Care
- ◆ Cable TV
- ◆ DSL Internet Services
- ◆ Telephone Service
- ◆ Laundry Services
- ◆ Out of Town Transportation
- ◆ Computer Technology Support
- ◆ Guest Meals
- ◆ Special Activities (i.e. bowling, outings to restaurants)

*The Ridgewood offers assisted living in a smoke-free environment.*

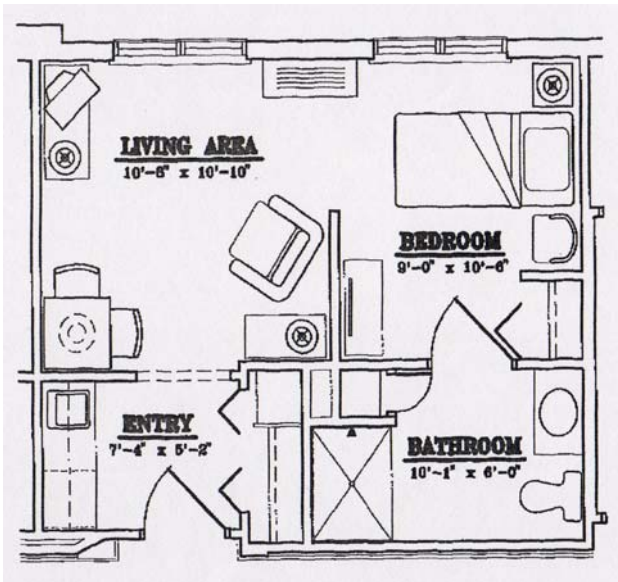
***2010 Monthly Fees for  
Personal Care Services***

<b>The Standard One-Bedroom Apartment .....</b>	<b>\$3,610.50 / month</b>
340 sf	
<b>The Standard One-Bedroom Corner Apartment .....</b>	<b>\$3,610.50 / month</b>
351 sf	
<b>The Deluxe One-Bedroom Apartment .....</b>	<b>\$4,203.50 / month</b>
417 s.f.	
<b>Second person .....</b>	<b>\$1,183.50 / month</b>
<b>Respite Stays .....</b>	<b>\$135.00 / day (1st person)</b>
<b>Respite Stays .....</b>	<b>\$45.50 (2nd person)</b>
<b>Pets .....</b>	<b>\$10.00 / per day for Respite Stays</b>
<b>Pets .....</b>	<b>\$200.00 / per month for Permanent Rentals</b>
<b>Phone Service .....</b>	<b>\$35.00 / per month</b>
<b>Laundry Service .....</b>	<b>\$20.00 / per month</b>
<b>Cable Television .....</b>	<b>\$23.50 / per month</b>

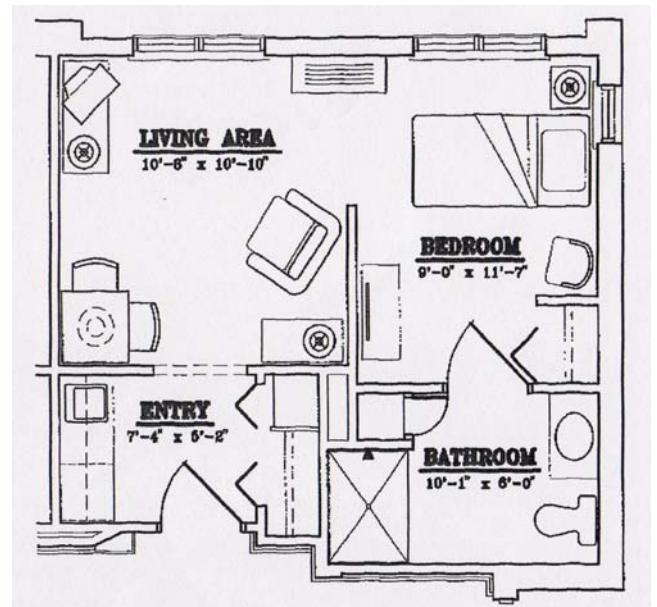
***The Ridgewood offers assisted living in a smoke-free environment.***

*We are pledged to the letter and spirit of U.S. policy for the achievement of equal housing opportunity throughout the Nation. We encourage and support an affirmative advertising and marketing program in which there are no barriers to obtaining housing because of race, color, religion, sex, handicap, familial status, or national origin.*

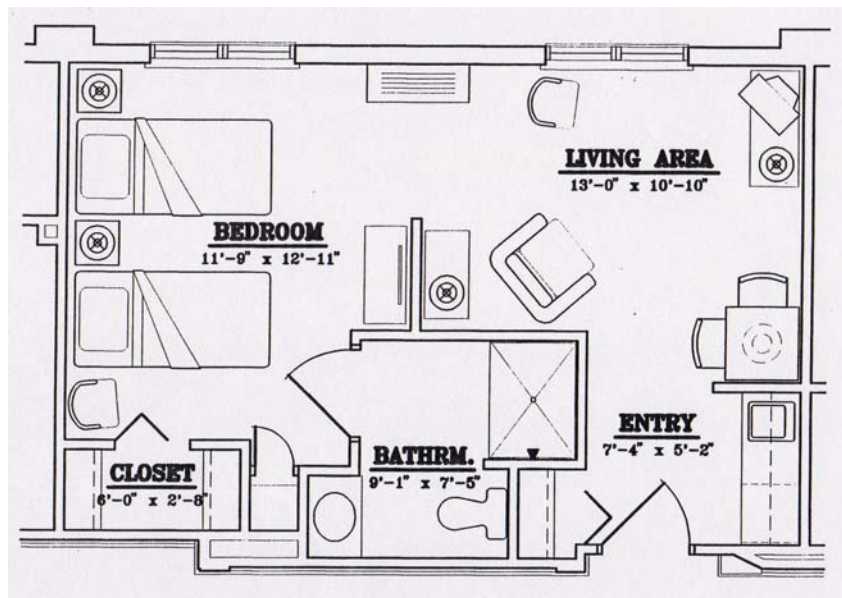
## Floor Plans



Standard One Bedroom 340 Square Ft.



Standard One Bedroom 351 Square Ft.



Deluxe One Bedroom 417 Square Ft.

## *Application Procedure for The Ridgewood*

- Step One** Complete and submit an **Admission Application to:**
- The Ridgewood at Shenango Valley  
One Elston Way,  
Hermitage, PA 16148
- Step Two** Review by the Admissions Committee. Upon approval of the application, your name will be placed on the waiting list. It will remain on the list until you are called to move or you request removal of your name.
- Step Three** When an apartment is available, you will be notified. You can reserve and hold your apartment with a \$350 refundable security deposit for 30 days. *Apartments are available on a first-come, first-served basis.* An additional \$400.00 deposit is required if you plan to bring your pet.
- At this time you will have 30 days to move into the apartment. If you accept the apartment, you must complete the application process as listed.
- Step Four** Once you are called to move, we will send a **Medical Evaluation** form. Your physician must complete this form for you.
- This is a standard form, which must be filled out for each resident. According to state law, it must be completed and signed by a physician within 60 days prior to admission or within 30 days after admission.*
- Step Five** Schedule an appointment for an initial move-in meeting with a marketing representative or the administrator of The Ridgewood at (724) 347-0998. During your initial meeting you will schedule your **Move-in Date**, complete a preliminary needs assessment and review preliminary paperwork for your move.
- The state requires The Ridgewood to complete a standardized screening instrument within 30 days prior to admission to The Ridgewood. This assessment reviews the resident's medical, social and personal care needs to allow us to provide services appropriate for each resident.*
- Step Six** Schedule a second appointment to meet with the administrator or a designated person to complete admission papers.
- Step Seven** Begin the move-in process.





Date Received \_\_\_\_\_

### ADMISSION APPLICATION

*All questions must be completed as much as possible.*

Name \_\_\_\_\_ Date application completed \_\_\_\_\_

Address \_\_\_\_\_

Birth date \_\_\_\_\_ Age \_\_\_\_\_ Birthplace \_\_\_\_\_

Marital Status:

Married  Widowed  Single  Divorced Maiden Name \_\_\_\_\_

Spouse's Name \_\_\_\_\_ Date of Marriage \_\_\_\_\_

Applicant's Occupation \_\_\_\_\_

Applicant's Former Employer \_\_\_\_\_

Education / Training \_\_\_\_\_

Referred by: \_\_\_\_\_

Names / Addresses / Phone Numbers of Children

\_\_\_\_\_  
\_\_\_\_\_  
\_\_\_\_\_  
\_\_\_\_\_  
\_\_\_\_\_  
\_\_\_\_\_  
\_\_\_\_\_  
\_\_\_\_\_  
\_\_\_\_\_  
\_\_\_\_\_

Veteran  Yes  No Service Dates \_\_\_\_\_

Name / Address / Phone Number of three persons and their relationship to you to be notified in case of serious illness:

\_\_\_\_\_  
\_\_\_\_\_  
\_\_\_\_\_  
\_\_\_\_\_  
\_\_\_\_\_

## Physical Condition

In the preparer's own words, write a description of the applicant's condition (impairments, special problems/needs). A medical evaluation form will be given to you at the time of admission for your doctor to complete.

Physical \_\_\_\_\_

\_\_\_\_\_

Mental \_\_\_\_\_

\_\_\_\_\_

Physician \_\_\_\_\_ Ambulance Service \_\_\_\_\_

Medicare Number \_\_\_\_\_ Social Security Number \_\_\_\_\_

Supplemental Health Insurance \_\_\_\_\_ Number \_\_\_\_\_

PACE Number \_\_\_\_\_ PACE Net Number \_\_\_\_\_

Long Term Care Insurance \_\_\_\_\_ Policy Number \_\_\_\_\_

## Financial Information

What is your present monthly income? \$ \_\_\_\_\_

My total assets are: \$ \_\_\_\_\_

Total assets may include the following:

- Annuities
- Interest and Dividends
- Other Income
- Savings Account
- Certificates of Deposit
- Checking Account
- Treasury/Corporate/Municipal Obligations
- Securities
- Trusts
- Stocks
- Real Estate
- If listing real estate, please include description, location, approximate value & income if any from the property

## CERTIFICATION OF INFORMATION AND RELEASE OF FINANCIAL INFORMATION

I certify that all the foregoing information is true and correct according to my knowledge at the present time. Any misrepresentation regarding my financial assets, or any concealment of any other facts set forth in this application shall be sufficient reason for the rejection of my application and my expulsion from The Ridgewood at Shenango Valley, if I shall have been admitted as a resident thereof. I further certify that all of these assets will be available for my costs of care and expenses at The Ridgewood at Shenango Valley. Any major reduction of assets will be verified before my admission.

I also authorize any individual or financial institution having possession or knowledge of my assets, to release this information to the appropriate official of The Ridgewood at Shenango Valley. (Must be signed and dated).

Signed \_\_\_\_\_

Witnessed \_\_\_\_\_

Date \_\_\_\_\_